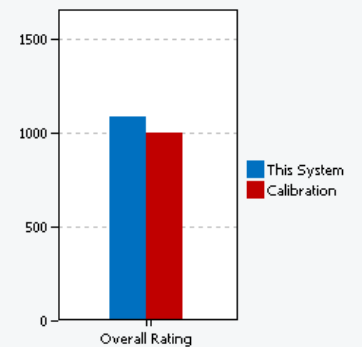
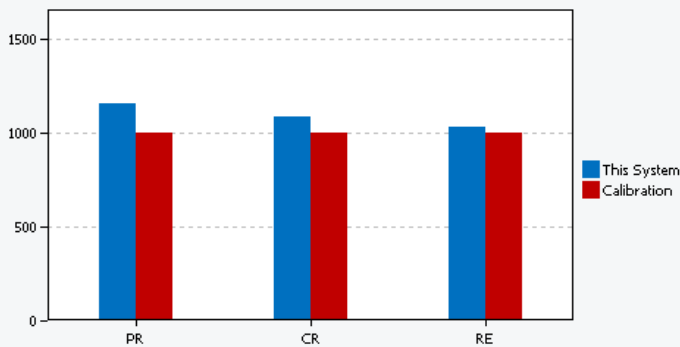


Test Summary

Project Name	acer ex215-54-50zl
Benchmark Version	1.0.3.60
Completion Date	2022-06-03 20:30:11
Iterations	3
System Conditioning	True
Process Idle Tasks	False

Performance Scores

	Productivity	Creativity	Responsiveness	Overall Rating
Scenario Rating	1149	1080	1024	1083
Iteration 1	1152	1075	1013	
Iteration 2	1148	1083	1020	
Iteration 3	1146	1082	1038	
Calibration	1000	1000	1000	1000



System Information Comparison Table

System Info	This System	Calibration System
BIOS	Insyde Corp. V1.26, 3/14/2022	Dell Inc. 1.7.7, 12/10/2017

Core + Memory

Motherboard type	Jameson_TL	0WWJRX
CPU	11th Gen Intel(R) Core(TM) i5-1135G7 @ 2.40GHz, 2419 Mhz, 4 Core(s), 8 Logical Processor(s)	Intel(R) Core(TM) i3-7100 CPU @ 3.90GHz, 3912 Mhz, 2 Core(s), 4 Logical Processor(s)
Memory Size	8.00 GB	4.00 GB
Virtual Memory	9.66 GB Total, 7.01 GB Free	5.24 GB Total, 3.80 GB Free
Virtualization	Enabled in firmware	Enabled in firmware
Secure Boot	Secure Boot StateOn	Secure Boot StateOn

Video

Resolution	1920 x 1080 x 60 hertz	1920 x 1080 @ 60 Hz
GPU 0	Intel(R) Iris(R) Xe Graphics (version: 30.0.101.1404)	Intel(R) HD Graphics 630 (version: 22.20.16.4836)

Storage

Drive 0	476.94 GB (512,105,932,800 bytes) NVMe WDC PC SN530 SDBPNPZ-512G-1114	119.24 GB (128,034,708,480 bytes) SK hynix SC311 SATA 128GB
Policies	Write caching: Default; Power protected: Default	Write caching: Default; Power protected: Default

Operating System

OS TYPE	Microsoft Windows 11 Home Single Language	Microsoft Windows 10 Pro
OS VERSION	10.0.22000.675	10.0.16299.15
Bitlocker	Volume C: Protection Off	Volume C: Protection Off
Tamper Protection	Enabled	Not Available
Windows Defender Antivirus	Enabled	Disabled

Windows Security Center	Enabled	Disabled
Power Policy	BAPCo SYSmark 2018	BAPCo SYSmark 2018
Power Slider Overlay	Better Performance	Not Applicable
Virtualization-based security	Disabled	Disabled

BAPCO® MISSION

Business Applications Performance Corporation (BAPCo®) is a non-profit consortium with a charter to develop and distribute a set of objective performance benchmarks for personal computers based on popular computer applications and industry standard operating systems.

ABOUT THE CALIBRATION SYSTEM

The calibration system is a system chosen as a reference point for all other SYSmark® 2018 results. BAPCo chose the configuration above for its wide availability and its representation of a typical mainstream PC at the time of release of SYSmark 2018.

SYSmark® has been calibrated in such a way that a PC with performance equivalent to this calibration system for a given workload will have a performance rating of 1000. A system twice as fast as the calibration system on a given workload (or, equivalently, that responds in half the time on average) will have a performance rating of 2000. This is true for both overall ratings and scenario ratings.