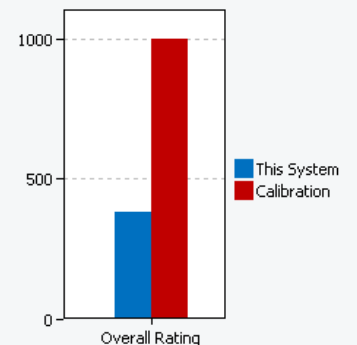
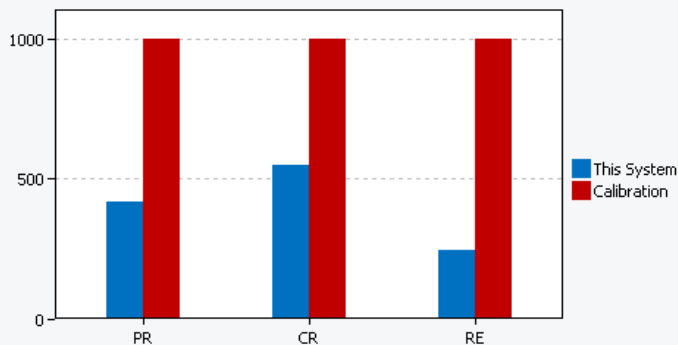


Test Summary

Project Name	project001
Benchmark Version	1.0.1.48
Completion Date	2019-07-29 12:29:35
Iterations	3
System Conditioning	True
Process Idle Tasks	False

Performance Scores

	Productivity	Creativity	Responsiveness	Overall Rating
Scenario Rating	418	546	245	382
Iteration 1	418	546	248	
Iteration 2	419	546	248	
Iteration 3	419	546	237	
Calibration	1000	1000	1000	1000



System Information Comparison Table

System Info	This System	Calibration System
BIOS	American Megatrends Inc. X555QG.325, 11/8/2018	Dell Inc. 1.7.7, 12/10/2017

Core + Memory

Motherboard type	X555QG	0WWJRX
CPU	AMD A12-9720P RADEON R7, 12 COMPUTE CORES 4C+8G, 2700 Mhz, 4 Core(s), 4 Logical Processor(s)	Intel(R) Core(TM) i3-7100 CPU @ 3.90GHz, 3912 Mhz, 2 Core(s), 4 Logical Processor(s)
Memory Size	8.00 GB	4.00 GB
Virtual Memory	8.70 GB Total, 7.18 GB Free	5.24 GB Total, 3.80 GB Free
Virtualization	Yes	Yes
Secure Boot	Secure Boot StateOn	Secure Boot StateOn

Video

Resolution	1366 x 768 x 60 hertz	1920 x 1080 @ 60 Hz
GPU 0	AMD Radeon(TM) R8 M435DX (version: 26.20.12001.11014)	Intel(R) HD Graphics 630 (version: 22.20.16.4836)
GPU 1	AMD Radeon R7 Graphics (version: 26.20.12001.11014)	

Storage

Drive 0	931.51 GB (1,000,202,273,280 bytes) TOSHIBA MQ04ABF100	119.24 GB (128,034,708,480 bytes) SK hynix SC311 SATA 128GB
Policies	Write caching: Default; Power protected: Default	Write caching: Default; Power protected: Default

Operating System

OS TYPE	Microsoft Windows 10 Home Single Language	Microsoft Windows 10 Pro
OS VERSION	10.0.18362.30	10.0.16299.15
Bitlocker	Volume C: Protection Off	Volume C: Protection Off
Power Policy	BAPCo SYSmark 2018	BAPCo SYSmark 2018

Power Slider Overlay

Better Performance

Not Applicable

BAPCO® MISSION

Business Applications Performance Corporation (BAPCo®) is a non-profit consortium with a charter to develop and distribute a set of objective performance benchmarks for personal computers based on popular computer applications and industry standard operating systems.

ABOUT THE CALIBRATION SYSTEM

The calibration system is a system chosen as a reference point for all other SYSmark® 2018 results. BAPCo chose the configuration above for its wide availability and its representation of a typical mainstream PC at the time of release of SYSmark 2018.

SYSmark® has been calibrated in such a way that a PC with performance equivalent to this calibration system for a given workload will have a performance rating of 1000. A system twice as fast as the calibration system on a given workload (or, equivalently, that responds in half the time on average) will have a performance rating of 2000. This is true for both overall ratings and scenario ratings.