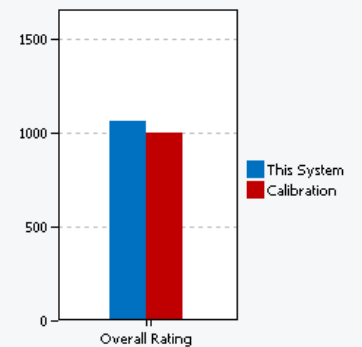
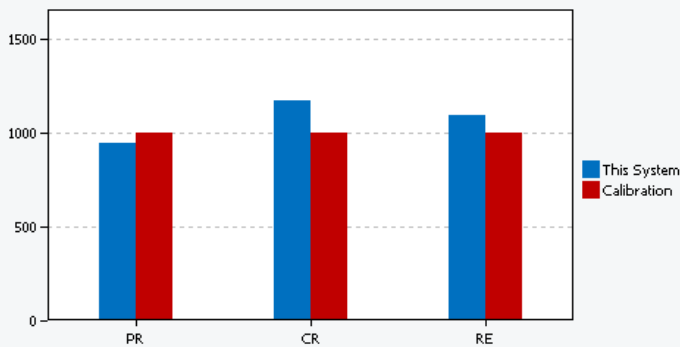


## Test Summary

Project Name	HUAWEI MATEBOOK D15 I3
Benchmark Version	1.0.3.60
Completion Date	2021-12-01 14:51:32
Iterations	3
System Conditioning	True
Process Idle Tasks	False

## Performance Scores

	Productivity	Creativity	Responsiveness	Overall Rating
Scenario Rating	<b>939</b>	<b>1165</b>	<b>1086</b>	<b>1059</b>
Iteration 1	941	1158	1075	
Iteration 2	938	1169	1097	
Iteration 3	938	1168	1085	
<b>Calibration</b>	<b>1000</b>	<b>1000</b>	<b>1000</b>	<b>1000</b>



## System Information Comparison Table

System Info	This System	Calibration System
BIOS	HUAWEI 1.35, 6/23/2021	Dell Inc. 1.7.7, 12/10/2017

### Core + Memory

Motherboard type	BOHB-WAX9-PCB-B2	0WWJRX
CPU	Intel(R) Core(TM) i3-10110U CPU @ 2.10GHz, 2592 Mhz, 2 Core(s), 4 Logical Processor(s)	Intel(R) Core(TM) i3-7100 CPU @ 3.90GHz, 3912 Mhz, 2 Core(s), 4 Logical Processor(s)
Memory Size	8.00 GB	4.00 GB
Virtual Memory	9.71 GB Total, 7.73 GB Free	5.24 GB Total, 3.80 GB Free
Virtualization	Enabled in firmware	Enabled in firmware
Secure Boot	Secure Boot StateOn	Secure Boot StateOn

### Video

Resolution	1920 x 1080 x 60 hertz	1920 x 1080 @ 60 Hz
GPU 0	Intel(R) UHD Graphics (version: 26.20.100.7528)	Intel(R) HD Graphics 630 (version: 22.20.16.4836)

### Storage

Drive 0	238.47 GB (256,052,966,400 bytes) SAMSUNG MZVLB256HBHQ-00000	119.24 GB (128,034,708,480 bytes) SK hynix SC311 SATA 128GB
Policies	Write caching: Default; Power protected: Default	Write caching: Default; Power protected: Default

### Operating System

OS TYPE	Microsoft Windows 10 Home Single Language	Microsoft Windows 10 Pro
OS VERSION	10.0.19043.1348	10.0.16299.15
Bitlocker	Volume C: Protection Off	Volume C: Protection Off
Tamper Protection	Enabled	Not Available
Windows Defender Antivirus	Enabled	Disabled
Windows Security Center	Enabled	Disabled

Power Policy	BAPCo SYSmark 2018	BAPCo SYSmark 2018
Power Slider Overlay	Better Performance	Not Applicable
Virtualization-based security	Disabled	Disabled

## **BAPCO® MISSION**

Business Applications Performance Corporation (BAPCo®) is a non-profit consortium with a charter to develop and distribute a set of objective performance benchmarks for personal computers based on popular computer applications and industry standard operating systems.

## **ABOUT THE CALIBRATION SYSTEM**

The calibration system is a system chosen as a reference point for all other SYSmark® 2018 results. BAPCo chose the configuration above for its wide availability and its representation of a typical mainstream PC at the time of release of SYSmark 2018.

SYSmark® has been calibrated in such a way that a PC with performance equivalent to this calibration system for a given workload will have a performance rating of 1000. A system twice as fast as the calibration system on a given workload (or, equivalently, that responds in half the time on average) will have a performance rating of 2000. This is true for both overall ratings and scenario ratings.